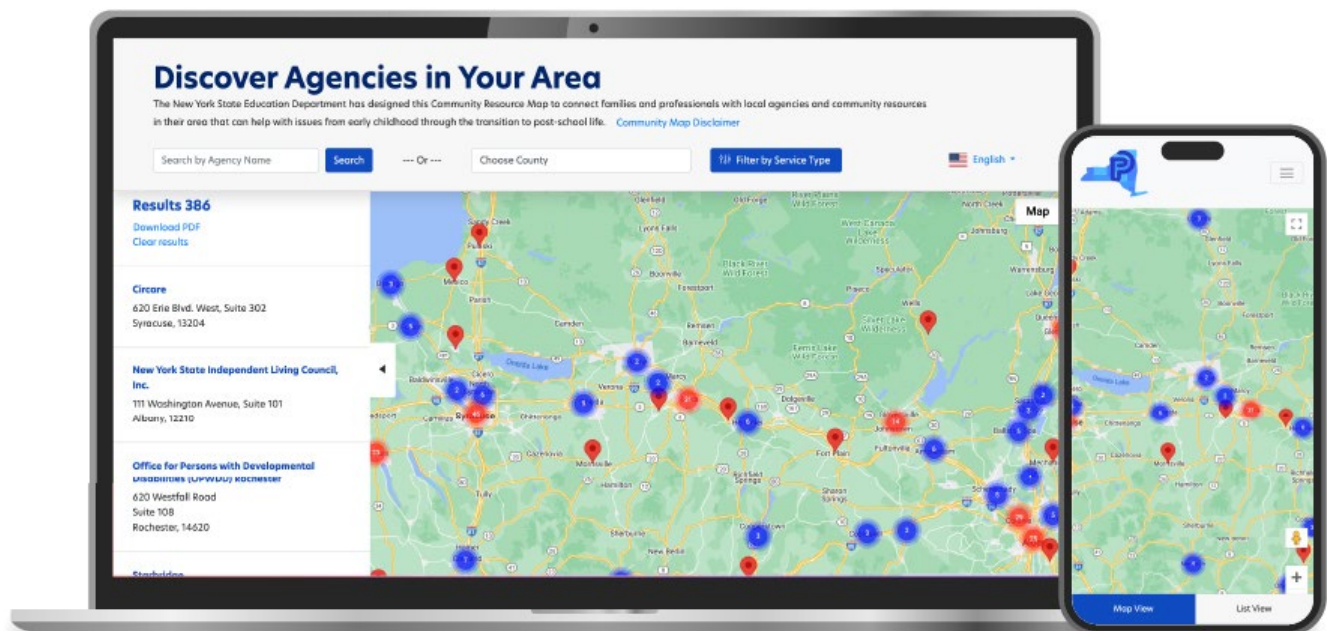


Community Resource Map

map.osepartnership.org

The Office of Special Education (OSE) Educational Partnership Community Resource Map connects families and professionals with local agencies and community resources in their area focused on services and supports for students with disabilities from early childhood through the transition to post-school life. You can filter the map by New York State (NYS) county, age range and/or service type as well as save and download searches for future use. Information on the site can also be translated into ten different languages.



About the Educational Partnership

The OSE Educational Partnership is a coordinated and cohesive network of support focused on enhancing services and supports for students with disabilities in NYS from early childhood and school-age education to engagement in post-school opportunities. The Partnership's website offers a wealth of information on available services and supports for students with disabilities. The site includes access to listings of free virtual and in-person events, workshops and training for families, educational professionals, and other community members, which are provided by regional teams of specialists across twelve NYS regions.

Discover Agencies in Your Area

Agencies can be searched by name, county, or service type.

Map View

Discover Agencies in Your Area
The New York State Education Department has designed this Community Resource Map to connect families and professionals with local agencies and community resources in their area that can help with issues from early childhood through the transition to post-school life. [Community Map Disclaimer](#)

Search by Agency Name [Search] Or --- Choose County [Filter by Service Type] English

Search by Agency
BOCES
Broome Tioga BOCES Youth Apprenticeship Program
Champlain Valley Educational Services (BOCES) (Franklin)

Search by NYS County
Choose County
ALBANY
ALLEGANY
BRONX
BROOME
CATTARAUGUS
CAYUGA
CHAUTAUQUA
CHEMUNG
CHENANGO
CLINTON
COLUMBIA
CORTLAND
DELAWARE
DUTCHESS
ERIE
ESSEX
FRANKLIN

Filter By Service Type
Family Supports
 Support groups (e.g., parents, caregivers, peers)
 Educational resources for families
 Evaluations (e.g., psychological, neurological, assistive technology)
 Respite services
Education/Training
 Preschool/early childhood programs
 Higher education (e.g., community college, four-year college)
 Certificate programs (e.g., food handling, welding, first aid)
 Adult education (e.g., reading, math, communication, GED)

Resource View

Access Therapy Group
Last updated: 06/14/2023

Address
515 Moe Road
Clifton Park, NY 12065

Contact
Email: info@accesstherapygroup.com
Phone: 518-280-4294
Website: <https://www.accesstherapygroup.com/>

About
Access Therapy Group is Clifton Park's leader in providing specialized 1:1 therapeutic services for infants through college age throughout the Capital Region. Our Team is comprised of experienced, licensed professionals who are dedicated to meeting the unique needs of children, young athletes and their families. Services are provided one patient at a time in our Clifton Park office, or in schools, homes and daycare centers corresponding to the program your child is enrolled through. Services: pediatric physical therapy, occupational therapy, speech therapy, aquatic therapy, early intervention therapeutic services, preschool therapeutic services, evaluation services, contract services: schools, preschools, adults with disabilities.

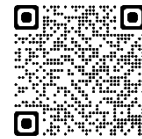
Services Provided
Healthcare
• Health specialists serving youth with disabilities (e.g., developmental pediatrician, occupational therapist, physical therapist, behavioral)

Resource Information
Find information on agencies you've found including address, contact information, and services provided.

The West Regional Family and Community Engagement (FACE) Center Parent Network of WNY



www.parentnetworkwny.org/events
Regional Learnings Catalog



www.parentnetworkwny.org
West FACE Center Email List